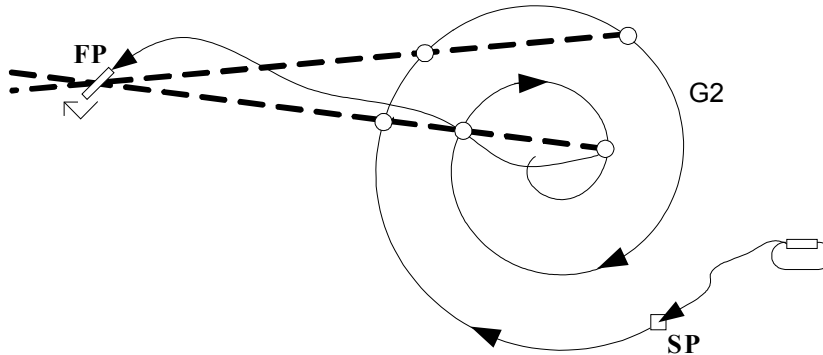


FLIGHT 7: PF and PL CLASSES (Task 9)

Objectives

To follow a spiral or irregular track in the direction briefed, identifying ground features from photographs and locating their positions on a map. All the ground features identified will be points on one or the other of two lines which must be drawn. The task ends with an outlanding at the point outside the spiral where these lines intersect. Any route may be chosen from the airfield to the spiral or from the circle to the outlanding site. The aim is to identify all the ground features and achieve the shortest total task time.



Summary

Competitors will be given:

- a spiral or other irregular line drawn on a map
- the direction to fly the line from the start point
- the location of a start point (SP) before which no ground features or time gates will be found
- sealed instructions giving the location of the outlanding site
- photos of any ground features to be identified

The task will start with a Deck Takeoff and end at the time of landing at the landing field. After completing the landing the competitor will be required to enter a Quarantine area for document and GPS collection.

Sealed Instructions

The location of the Finish Point will be provided in a sealed envelope. If the competitor is unable to navigate to FP this envelope may be opened. In the event that this envelope is not returned properly sealed a penalty will be imposed.

Safety

During the task competitors must not back track along the track line against the direction of the task. If there is a need to backtrack competitors must leave the track line and fly back well clear of it before rejoining the track line at an earlier point.

FLIGHT 7: PF and PL CLASSES (Task 9)

Scores

Each ground feature correctly identified and located on the map to within 2mm will earn 100 points. The task score calculation will be:

$$\text{Pilot Score} = (500 \times t_{\text{Min}} / t_{\text{p}}) + \text{Turnpoint Score}$$

Where:

t_{p} = pilot's time

t_{Min} = shortest time in pilot's class

The following penalties will apply:

Takeoff deck penalty	20%
Backtracking against the task direction	100%
Breach of Quarantine	100%
Photo or marker misplaced on map > 2mm but < 5mm	No photo/marker score
Photo or marker misplaced on map > 5mm	Penalty 50% of photo/marker score
Sealed envelope not returned sealed	50% of pilot's total score

FLIGHT 7: PF and PL CLASSES (Task 9)

A



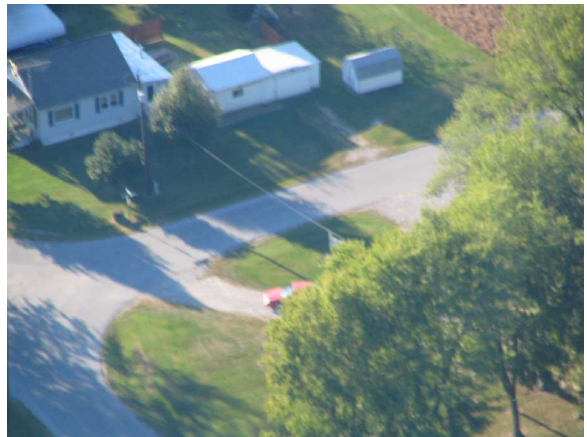
B



C



D



E

